



We going to be learning about...

Plants.



Plants: Wild Plants

Here are some common plants that grow wild. Do you know what any of them are called?

















Plants: Wild Plants - *answers*



daisy



buttercup



dandelion



clover



nettle



bramble



dog rose



ivy

Plants: Garden Plants

Here are some common plants that people grow in gardens. Do you know what any of them are called?

















Plants: Garden Plants - *answers*



grass



iris



lily



poppy



rose



sunflower



sweetpea



fuschia

Plants: Trees

Trees are a kind of plant. Here are some common trees.



oak



holly



hawthorn



birch



rowan



beech



sycamore



lime

Do they all look similar? How are they different?

Parts of a Flowering Plant

What do you know about the parts of a plant?

On the next page there is picture of a plant. However, the parts of the plant have been mixed up...

You have **one minute** to put the plant back together and label the parts.

Remember – you don't need a printer to complete this task. You can use a piece of paper from home to draw the plant and then label it, or you might want to discuss the mixed up parts with a family member and talk about the correct order.

On your marks...

Get set...

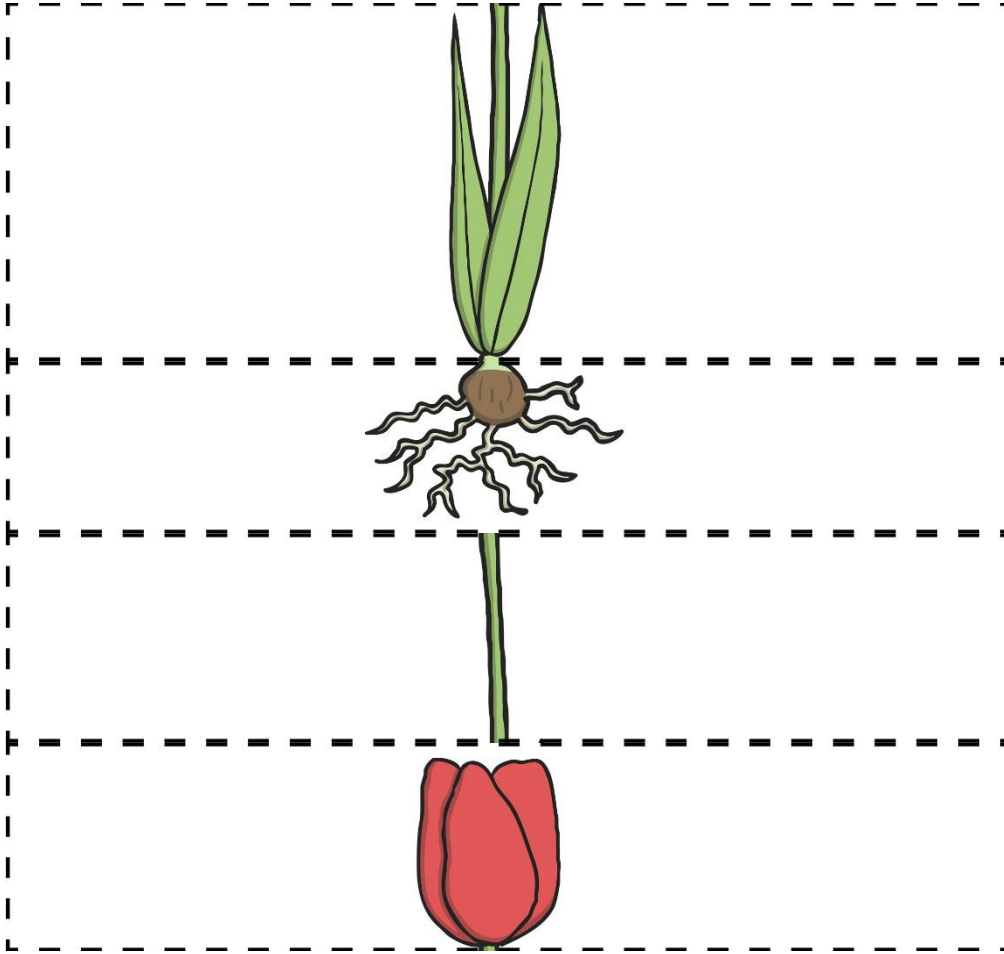
GO!

00:00

Remember to time yourself!



Parts of a Flowering Plant



Key words:

leaves

stem

flower

roots

Parts of a Tree

What do you know about the parts of a tree?

On the next page there is picture of a tree. However, the parts of the tree have been mixed up...

You have **one minute** to put the plant back together and label the parts.

Remember – you don't need a printer to complete this task. You can use a piece of paper from home to draw the tree and then label it, or you might want to discuss the mixed up parts with a family member and talk about the correct order.

On your marks...

Get set...

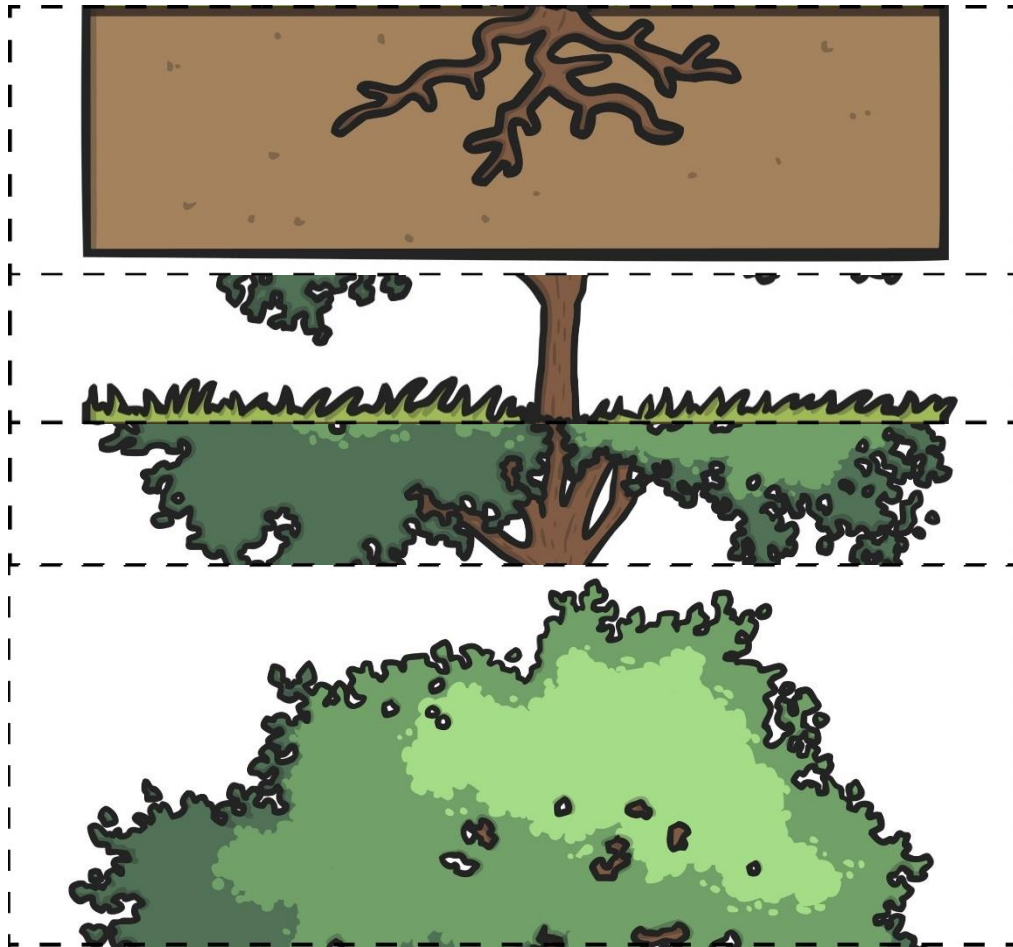
GO!

00:00

Remember to time yourself!



Parts of a Tree



Key words:

leaves

roots

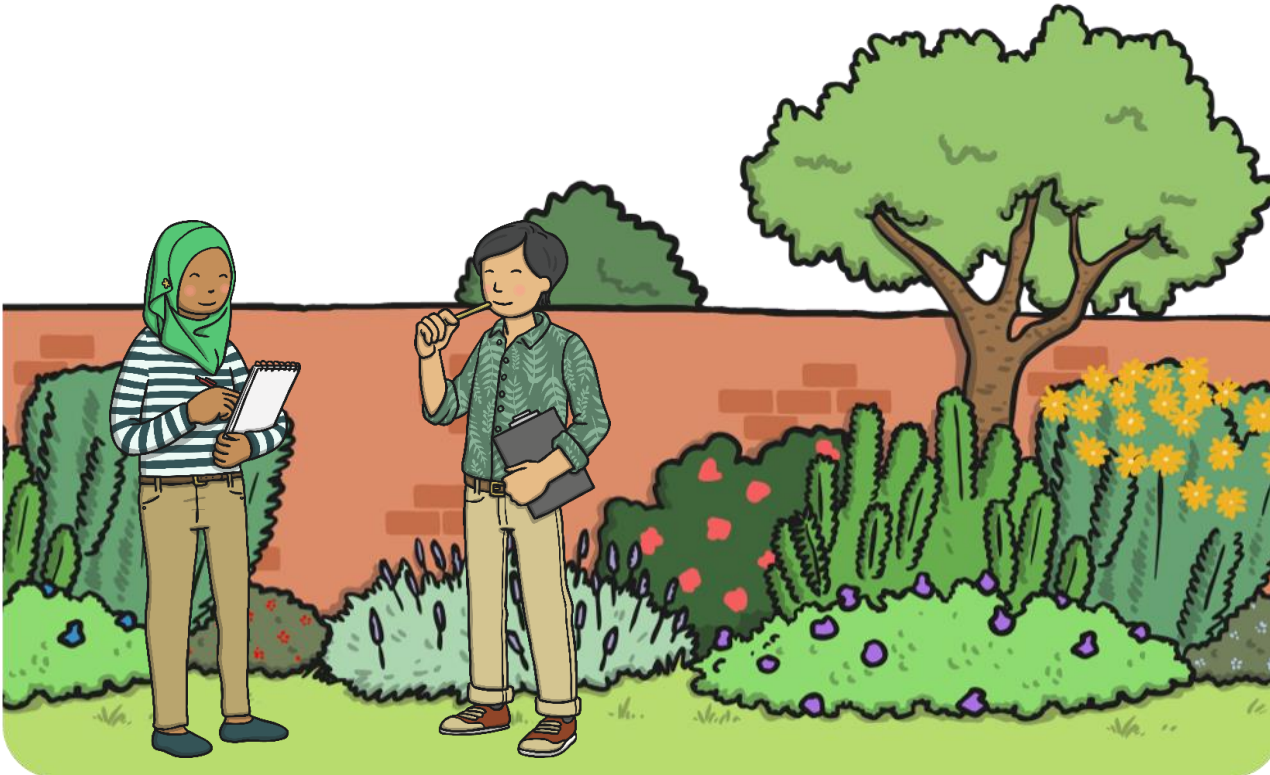
branches

trunk

Task: Observing Plants

During one of your daily walks this week, we would like you to explore some of the different plants and trees in your local area.

You may want to complete this task over more than one day, as we are now allowed to visit parks with members of our household.



Task 1: Tree Observation

Tree Diagram: Draw a picture of an interesting tree. Label the main parts.

Leaf Observational Drawing: Find a leaf from the tree you have drawn. Look at it carefully with a magnifying glass and draw what you see.

Measurements: Measure the leaf with a ruler.

The leaf is _____ cm long.

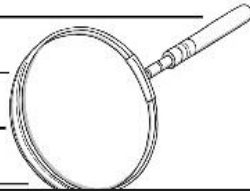
The leaf is _____ cm wide.

Task 2: Flowering Plant Observation

Choose an interesting flowering plant. Look at it closely.

Draw the plant and label the different parts.

Write a description of the plant.



What did you see?



What interesting plants and trees did you find?

Tell a family member all about them, and listen carefully while they tell you about theirs.